

INTERNATIONAL COLLABORATION →



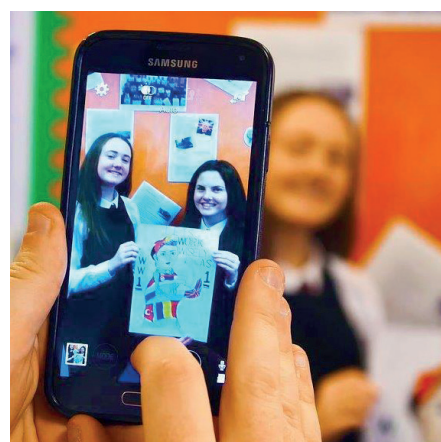
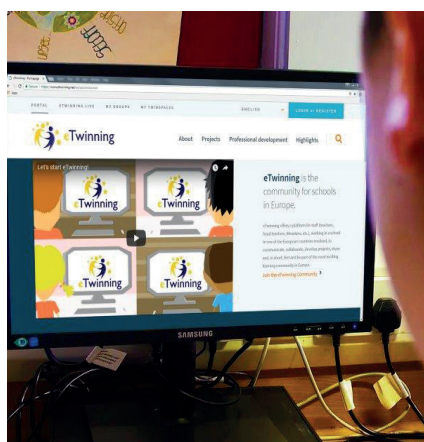
# eTwinning

A sophisticated digital platform with social networking features that supports a vibrant community of teachers to collaborate on projects and develop their CPD

## AT A GLANCE

- A unique learning community of professionals.
- Supports teamwork, empowers cultural awareness and fosters shared understanding.
- Models lifelong learning to students.
- Inclusive, free to join, safe and easy to use.

REVIEW BY JOHN DABELL



Educators are now global agents of change and thanks to the internet we can learn from and support our peers, share ideas, and exchange resources easily.

One brilliant way to connect with colleagues in other countries is to join the eTwinning learning community, which is managed by the British Council in the UK. It's an exciting platform for European teachers to interconnect, pool resources and develop projects together. Nearly ½ million teachers and 4 in 10 schools in Europe have already participated.

eTwinning allows you to access diverse ideas, approaches and perspectives. This is the largest community of teachers in Europe so there is a lot of brainpower on tap. It encourages you to ask more critical questions of each other, share teaching treasures and move forward together.

eTwinning also offers a safe, online environment for cross-border education projects, and provides schools with highly accessible tools to enhance digital learning and support intercultural and international partnerships. There are over 60,000 projects already up and running, along with tools to help you create your own. This is a collaborative colossus with inbuilt public

recognition rewarding teachers' efforts by a system of Quality Labels for project work, and certificates for involvement in professional development.

CPD has never been easier, as eTwinning offers online and face-to-face training, and professional development learning events, seminars, webinars and workshops throughout the year. There are also opportunities to attend workshops in another country.

Joining eTwinning means you can be a truly 21st century, outward looking, connected educator – actively seeking new opportunities, resources to grow as a professional, and funding for your international project through Erasmus+. By networking, joining forces with others, and connecting the dots, you become part of something special, with a unique camaraderie and creativity.

Success in all fields these days depends on close cooperation and eTwinning is a marvellous example of how collaboration really does make a world of difference. Register via [eTwinning.net](http://etwinning.net) and if you need some support, the team at the British Council is there to help you via [britishcouncil.org/eTwinning](http://britishcouncil.org/eTwinning)

teach  
SECONDARY

## VERDICT

- ✓ A superb way to leverage online communities to enhance student learning and power CPD
- ✓ Helps you reflect on your practice and grow as a connected teacher
- ✓ Opens up classrooms and gives learning a new focus
- ✓ Improves digital citizenship and creativity, and connects thinking

## UPGRADE IF...

You are looking to become a more connected, lifelong educator, and support students in becoming empathetic and global teachers.

**“Joining eTwinning means you can be a truly 21st century, outward looking, connected educator”**

Find out more at [www.etwinning.net](http://www.etwinning.net)

eTwinning is co-funded by the Erasmus+ programme of the European Union and is managed by the British Council in the UK.