



PASCL

**The European
Students' Union**
REPRESENTING STUDENTS
SINCE 1982



PASCL PROJECT

Introduction to Student Centred Learning

28th January 2016, Cardiff

Viktor Grønne, ESU Executive Committee Member



1

Introduction





The European Students' Union

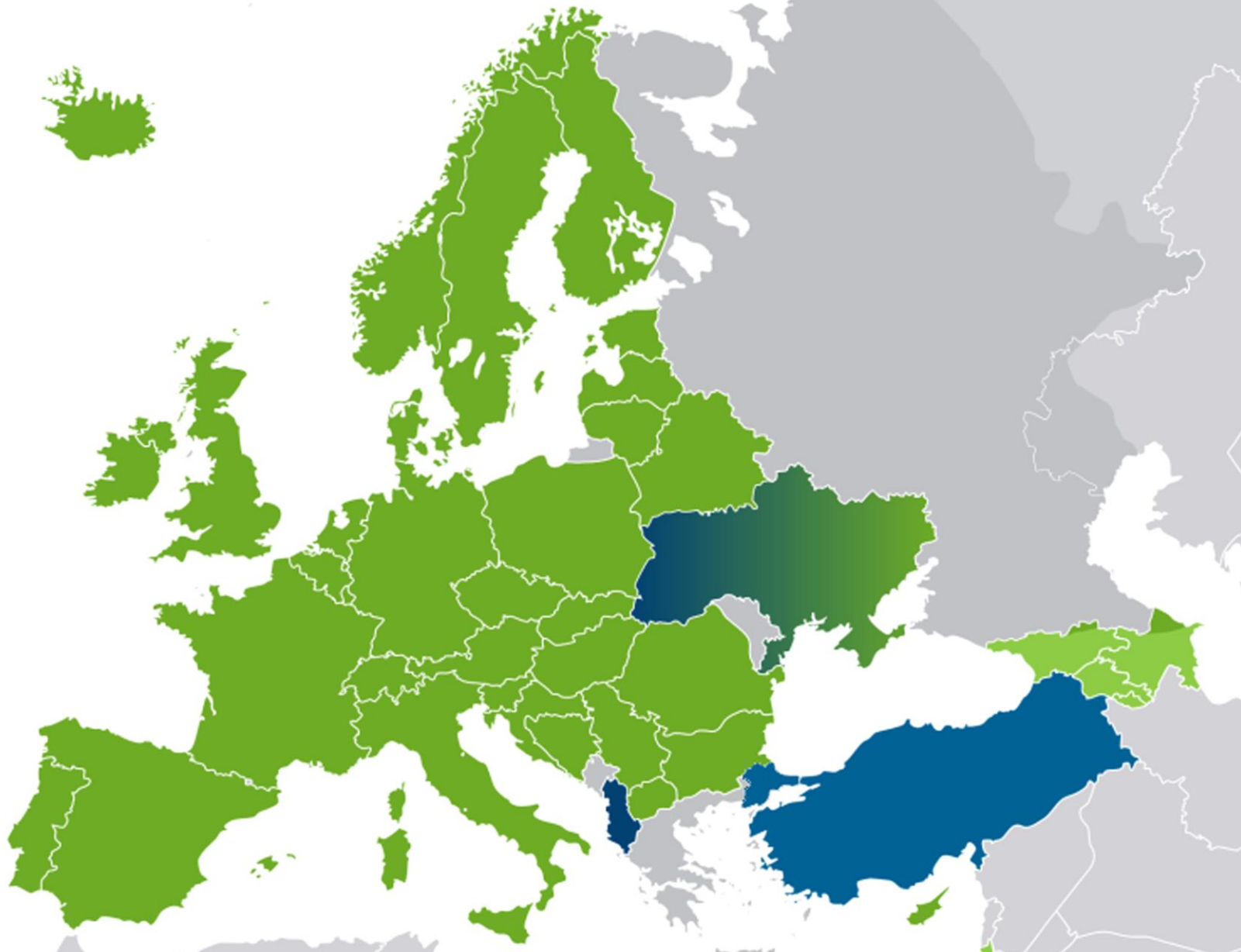
- **The European Students' Union (ESU)** is an umbrella organisation of **45 National Unions of Students** from **38 different countries**. Through its members, ESU represents over 15 million students in Europe.
 - The NUSes are open to all students in their respective country regardless of political persuasion, religion, ethnic or cultural origin, sexual orientation or social standing.
 - Our members are also student-run, autonomous, representative and operate according to democratic principles.
- 

ESU is member of the European Youth Forum



NUS – Full members





www.esu-online.org

2 STUDENT CENTRED LEARNING, the term



How would YOU define it?



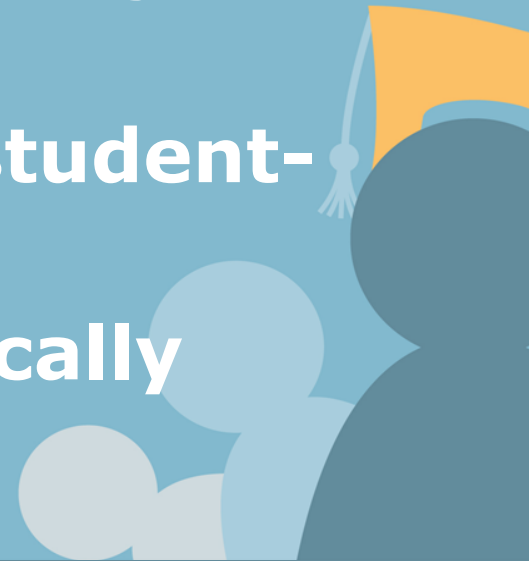
Common misconceptions

- **SCL does not mean anything in practice**
- **SCL requires higher amount of resources**
- **SCL is not appropriate to teach a large and diverse student body**
- **SCL undermines the teaching profession**
- **Students have more work to do in SCL**
- **Teachers have to do more preparatory work in SCL**



Common misconceptions

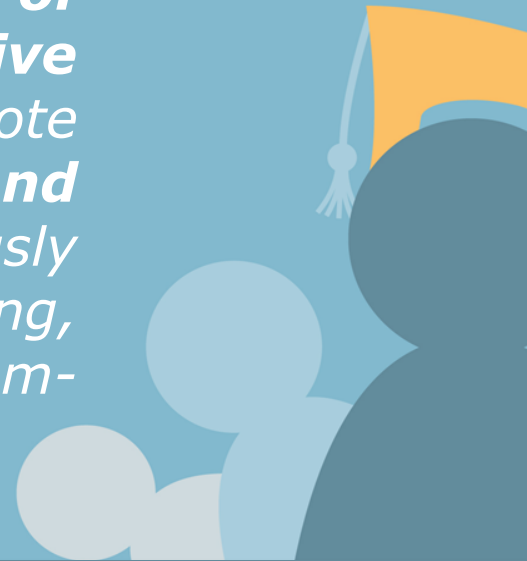
- Problem based learning is the same as SCL
- SCL is not suitable for all academic fields
- SCL students learn very little subject-matter
- Not all teachers can teach in student-centred way
- SCL requires being technologically minded



Definition

Student-Centred Learning

*represents both a **mindset and a culture** within a given higher education institution and is a learning approach which is broadly related to, and supported by, **constructivist theories of learning**. It is characterised by **innovative methods of teaching** which aim to promote learning in **communication with teachers and other learners** and which take students seriously as active participants in their own learning, fostering transferable skills such as problem-solving, critical thinking and reflective thinking.*



3

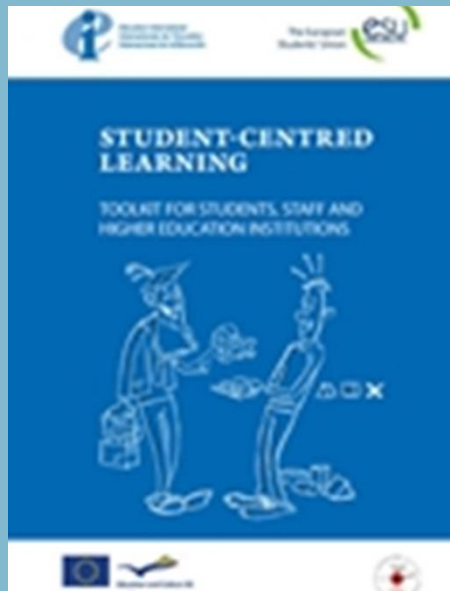
Concept of Student Centred Learning

Learning
Student Centred

In the bottom right corner, there are stylized silhouettes of three people. One person is wearing a graduation cap (mortarboard) with a tassel. The silhouettes are in shades of blue and grey.

State of play

No common understanding



Time for
Student Centred
Learning

Keystones of project

- One-year project starting autumn 2009, ending autumn 2010.
- Includes content work and research, local events and a student/staff union development component.
- Aims at developing policy on SCL within ESU but also beefing up work on the topic within unions.
- Will feed into SCL topic at Bologna process level
- Developed toolkit



Principles of SCL

- I. SCL requires an on-going reflexive process**
- II. SCL does not have “One size fit all” solution**
- III. Students have different learning styles**
- IV. Students have different needs and interests**
- V. Choice is central to effective learning in SCL**



Principles of SCL

VI. Students have different experiences and background knowledge

VII. Students should have control over their learning

VIII. SCL is about “enabling” not “telling”

IX. Learning needs cooperation between students and staff



Integral components

- **Flexibility and freedom of learning**
- **Better quality teaching and teachers**
- **Clear mutual understanding**
- **On-going improvement**
- **Positive attitude and learning environment**
- **Focus on Learning Outcomes**
- **Benefits for both students and teachers**



SCL Toolkit- checklist



- Toolkit provides explanation of the concept, as well as guidelines for implementation
- Indicative checklist of what may be required in terms of successful implementation of the SCL approach
- Available at www.esu-online.org

1. Consultation with Students [Tick as Appropriate]		Yes	No
1.1	Are there transparent procedures in place for students to be able give feedback on the quality of the educational process?	<input type="radio"/>	<input type="radio"/>
1.2	Are students consulted on curriculum content?	<input type="radio"/>	<input type="radio"/>
1.3	Are students consulted on the teaching and evaluation methods used?	<input type="radio"/>	<input type="radio"/>
1.4	Are students involved in periodic programme quality reviews?	<input type="radio"/>	<input type="radio"/>
1.5	Are students involved as full and equal members in committees where issues relating to the student experience are discussed at all levels (e.g. department, faculty, university, etc.)?	<input type="radio"/>	<input type="radio"/>
1.6	Are straightforward procedures in place for students to appeal decisions regarding their academic attainment or progression?	<input type="radio"/>	<input type="radio"/>



4

SCL in practice

practice



Can you visualise...



... implementation



Examples and experiences



5 PASCL project and assessment procedures



Peer Assessment of Student Centred Learning in Higher Education Institutions in Europe



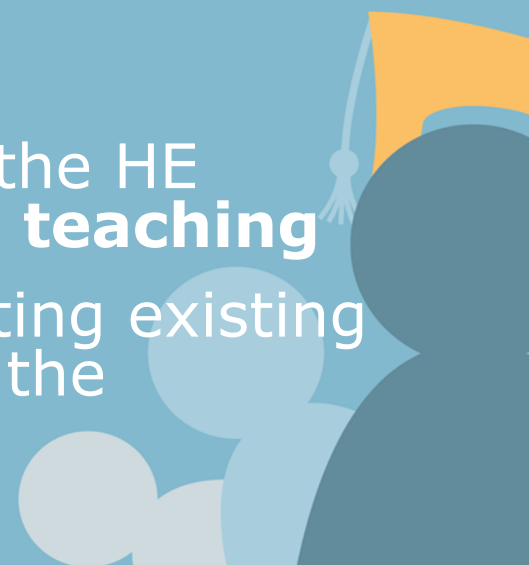
What is it all about?

“PASCL aims to assist in implementing sound student-centred learning (SCL) strategies and approaches at institutional level and to foster a culture of SCL in higher education institutions across Europe.”



Aims

- **Developing a peer assessment framework** for “student-centeredness” of a higher education institution, leading to the award of a European recognition for Student-centred institution;
- Giving higher education institutions insight into their **performance in implementing** student centred learning and room for further improvements.
- Making visible the teaching mission of the HE institutions, **rewarding excellence in teaching**
- **Facilitating peer learning** by presenting existing practices, discussion and evaluation of the approaches in teaching and learning



Project partners (Consortium)



- ESU – Legally Registered as ESIB – The National Unions of Students in Europe
- Network of Universities from the Capitals of Europe, UNICA
- University of Jyväskylä
- Közép-európai Egyetem (Central European University)
- Melius s.r.l.
- Knowledge Innovation Centre (Malta) Ltd (KIC)



Deliverables

- Research Study - Overview on Student Centred Learning in Higher Education in Europe
- Set of Criteria for SCL Peer Assessment
- Guidelines for SCL Peer Assessment
- Experts' trainings
- Experts' handbook
- Pilot site visits
- PASCL pool of experts
- SCL site visits
- Online dissemination
- 2 annual conferences
- Final conference
- Management meetings
- Research meetings



Assessment

- What is assessment
- How does it work
- **ESG Standard for Internal Quality Assurance**
- *Standard 1.3 Student-Centred learning , teaching and assessment*

“Institutions should ensure that the programmes are delivered in a way that encourages students to take an active role in creating the learning process, and the assessment of students reflects this approach.”



PASCL opportunities



- **How can you get involved**
 - 1. Nominate University**
 - 2. Apply for the pool of experts**
 - 3. Send us your story**
- **Follow FB: PASCL Project**
- **Pascl.eu**



? Questions ?

! Comments !



**The European
Students' Union**
REPRESENTING STUDENTS
SINCE 1982



**That's all folks!
THANK YOU**

viktor@esu-online.org



Lifelong
Learning
Programme



European Students' Union



@ESUtw



ESU Brussels



esutwt



The European Students' Union

Rue de l'Industrie 10 · 1000 Brussels, Belgium · Tel: +32 2 893 25 45 · www.esu-online.org